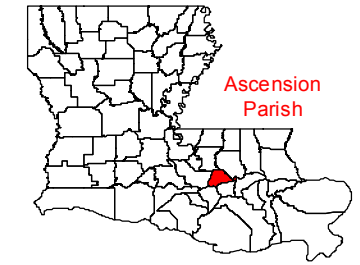
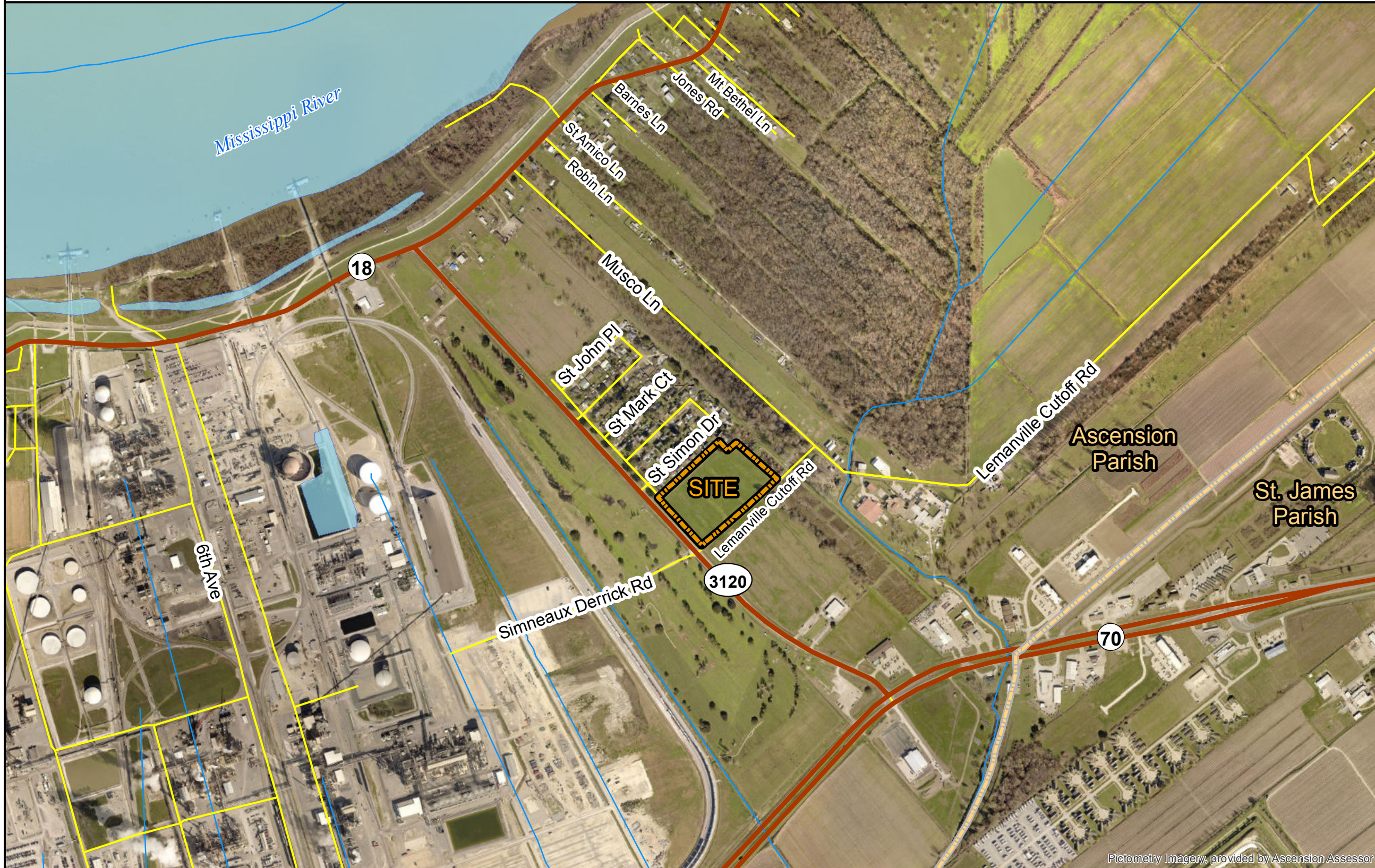


Exhibit M. Foti - Highway 3120 N Roadway Transportation  
Infrastructure Map



# Foti - Highway 3120 N Roadway Transportation Infrastructure Map

Document Path: R:\DWG\16-000\16-392\Foti Sites\Foti - Hwy 3120 N\Maps\Program Application Exhibits\Exhibit M - Roadway Transportation Infrastructure Map.mxd



### LEGEND

- Foti - Highway 3120 N (± 9.67 Ac.)
- Parish Boundary
- Existing Roadway**
- State Highway
- Local Road
- Streams
- Water Bodies



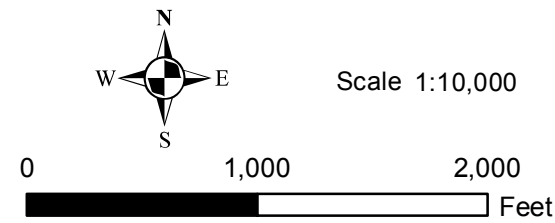
SITE NAME: Foti - Highway 3120 N	
Drawn By:	CDS
Checked By:	GJB
Date:	12/18/2017

**General Notes:**

1. The information presented herein was obtained from various resources and should be considered preliminary.
2. No attempt has been made by Duplantis Design Group, PC to verify site boundary, title, actual legal ownership, deed restrictions, servitudes, easements, or other burdens on the property.

**References:**

1. 2017 Aerial imagery from Ascension Parish Assessors website
2. Site boundary from Harold J. Terracina, Inc.
3. Transportation data from U.S. Census Bureau



Pictometry Imagery, provided by Ascension Assessor

8352 Bluebonnet Blvd.  
Baton Rouge, LA 70810  
Phone: 225-751-4490  
www.ddgpc.com