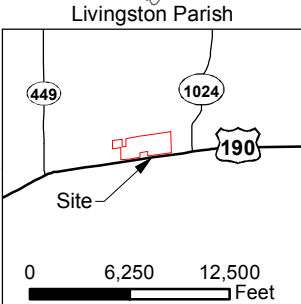
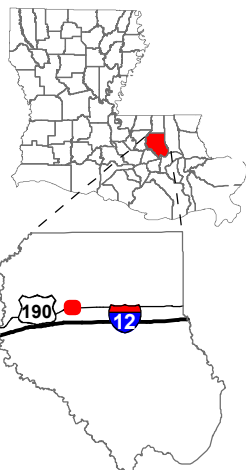


# Exhibit K. Livingston Industrial Park Wetlands Encumbrances

Project:  
**Site Exhibit for  
Livingston Industrial Park  
Livingston Parish, LA**

Client:

**BRAC**



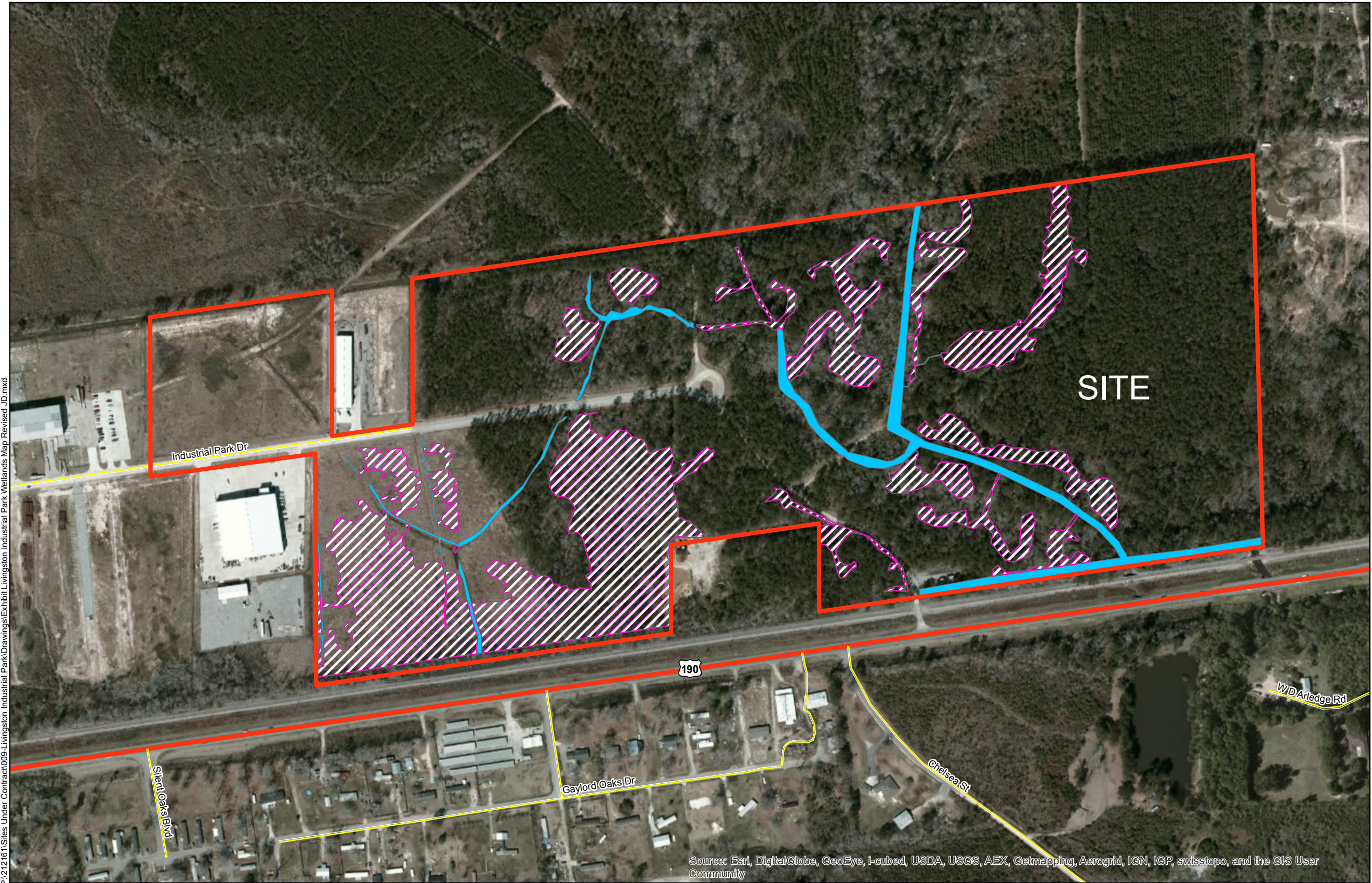
- Legend:**
- Site Boundary
  - Wetlands (21.92 Ac. ±)
  - Wetlands (19.05 Ac. ±)
  - Other Waters of the U.S. (2.87 Ac. ±)
  - Existing Roadway
    - US Highway
    - Local Roads



Source:  
GIS features acquired from public domain state and federal data sources (LDOTD, GNIS, LOSCO, US Census Bureau).

Date: 2/26/2014  
Project Number: 212161.009  
Drawn By: MMS  
Checked By: TMG

**CSRS**  
IMAGINE SHAPE DELIVER  
6767 Perkins Road Suite 200 Baton Rouge, LA 70808  
Telephone: 225 769-0546 Fax: 225 767-0060  
www.csrsonline.com



## General Notes:

1. No attempt has been made by CSRS, Inc. to verify title, actual legal ownership, deed restrictions, servitudes, easements, or other burdens on the property, other than that furnished by the client or his representative.
2. Transportation data obtained from 2013 TIGER datasets via U.S. Census Bureau at <ftp://ftp2.census.gov/geo/tiger/TIGER2013>.
3. Wetlands delineation based USACE Jurisdictional Determination dated 14 January 2014 file number MVN-2010-00526-2-SA and MVN-2011-01072-SK dated 11 August 2011.
4. According to SURA, Inc's Desktop Review, there are no Cultural Encumbrances on this site.
5. Total site area is 94.34 Ac. ± with 21.92 Ac. ± wetlands encumbered area.



Scale 1:4,000  
0 165 330 Feet

P:\212161\Sites Under Contract\009-Livingston Industrial Park\Drawings\Exhibit Livingston Industrial Park Wetlands Map Revised.JD.mxd

Source: Esri, DigitalGlobe, GeoEye, i-cubed, USDA, USGS, AEX, Getmapping, Aerogrid, IGN, IGP, swisstopo, and the GIS User Community