



**SAURAGE ROTENBERG™**  
COMMERCIAL REAL ESTATE

# INDUSTRIAL LAND FOR SALE

## 187.36 ACRES VACANT LAND - GEISMAR, LA

7238 LOUISIANA 75, GEISMAR, LA 70734

**\$10,500,000.00**

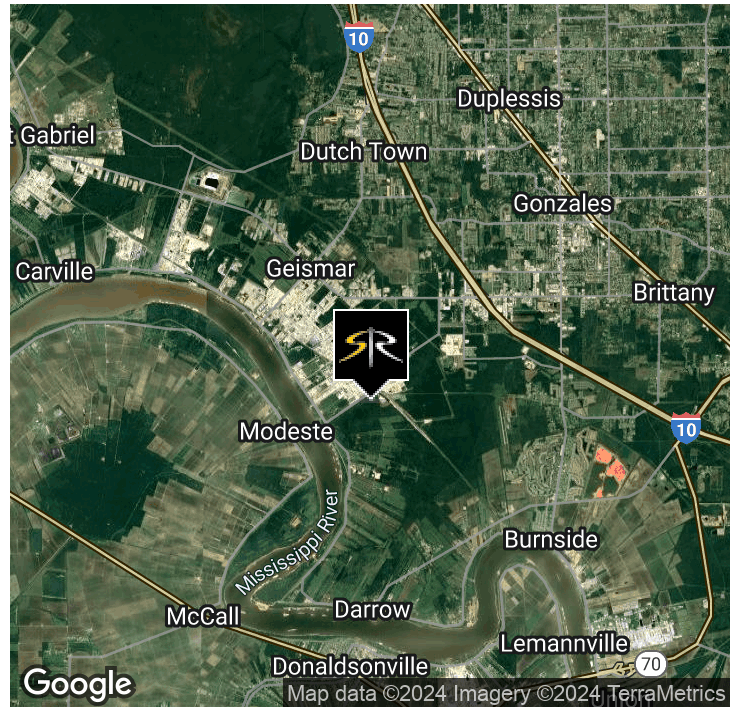


### OFFERING SUMMARY

<b>Sale Price:</b>	<b>\$10,500,000</b>
<b>Lot Size:</b>	<b>187.36 Acres</b>
<b>Price / Acre:</b>	<b>\$56,042</b>

### PROPERTY HIGHLIGHTS

- 187.36 Acres Industrial Land on Hwy. 75
- 737' Frontage on Hwy. 75
- Level Topography
- Heavy Industrial Corridor
- No Known Environmental Hazards
- Wetlands: Determined
- Confidentiality Agreement Required
- Environmental & Historical Evaluation Available



**BILL JEANSONNE**

Commercial Investment Specialist  
(D)225.802.2932  
bill@sr-cre.com

**DON HANNA**

Commercial Sales & Leasing  
(D)225.802.5450  
don@sr-cre.com

**SAURAGE ROTENBERG COMMERCIAL REAL ESTATE, LLC**

5135 Bluebonnet Boulevard  
Baton Rouge, LA 70809  
225.766.0000 | sauragerotenberg.com

The information contained herein has either been given to us by property owners or is from sources deemed reliable and is believed to be correct, it is not in any way warranted or guaranteed by Saurage Rotenberg Commercial Real Estate. This information is submitted subject to errors, omissions, changes in price, rental or other conditions, withdrawal without notice, and to any special listing conditions imposed by the principals. Licensed in Louisiana & Mississippi.





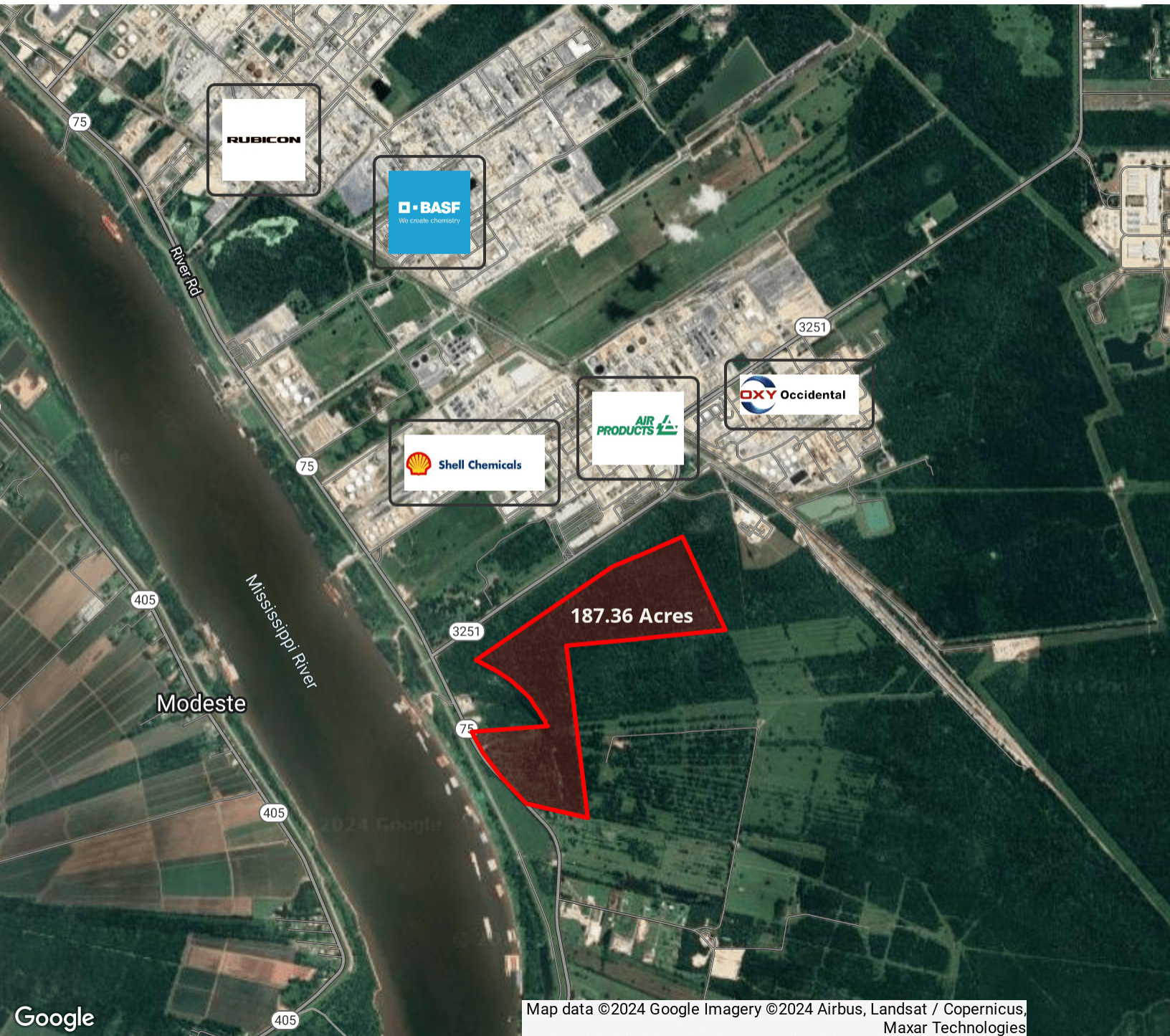
**SAURAGE ROTENBERG™**  
COMMERCIAL REAL ESTATE

# INDUSTRIAL LAND FOR SALE

## 187.36 ACRES VACANT LAND - GEISMAR, LA

7238 LOUISIANA 75, GEISMAR, LA 70734

**\$10,500,000.00**



Map data ©2024 Google Imagery ©2024 Airbus, Landsat / Copernicus, Maxar Technologies

**BILL JEANSONNE**  
Commercial Investment Specialist  
(D)225.802.2932  
bill@sr-cre.com

**DON HANNA**  
Commercial Sales & Leasing  
(D)225.802.5450  
don@sr-cre.com

**SAURAGE ROTENBERG COMMERCIAL REAL ESTATE, LLC**  
5135 Bluebonnet Boulevard  
Baton Rouge, LA 70809  
225.766.0000 | sauragerotenberg.com

The information contained herein has either been given to us by property owners or is from sources deemed reliable and is believed to be correct, it is not in any way warranted or guaranteed by Saurage Rotenberg Commercial Real Estate. This information is submitted subject to errors, omissions, changes in price, rental or other conditions, withdrawal without notice, and to any special listing conditions imposed by the principals. Licensed in Louisiana & Mississippi.