

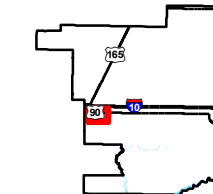
Exhibit S. T.O. Allen Industrial Park
North U.S. Geological Survey Quad Map



Allen Estates North Site U.S. Geological Survey Quad Map

USGS Topographic Map
Allen Estates North Site
Jefferson Davis Parish, LA

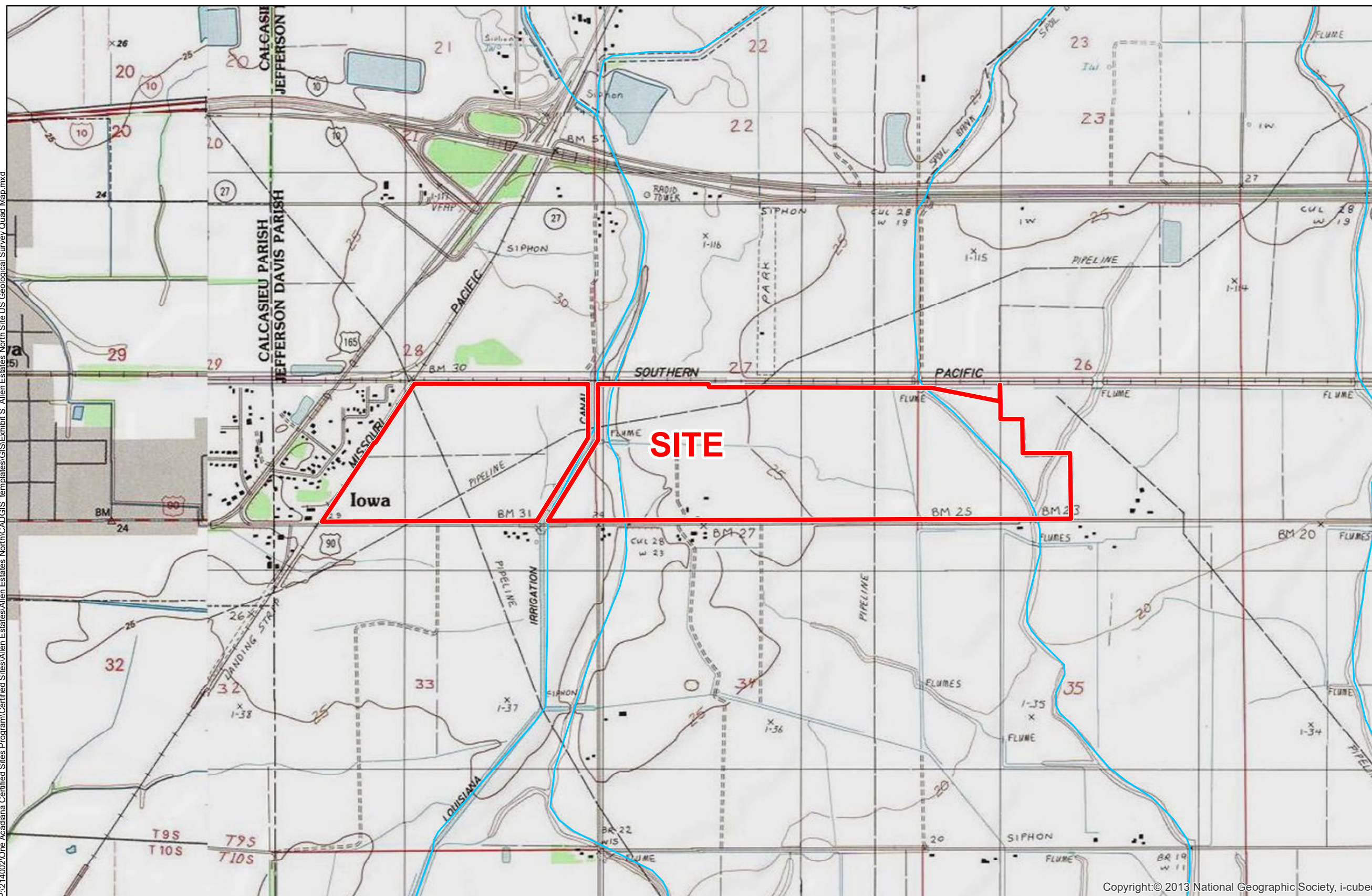
One Acadiana



Jefferson Davis Parish

LEGEND

- Site Boundary (561.51 Ac. ±)
- Blue Line Streams



Copyright: © 2013 National Geographic Society, i-cubed

General Notes:

1. No attempt has been made by CSRS, Inc. to verify site boundary, title, actual legal ownership, deed restrictions, servitudes, easements, or other burdens on the property, other than that furnished by the client or his representative.
2. Topo data and symbologies from USDA NRCS site <http://datagateway.nrcs.usda.gov/GDGOrder.aspx> as created by USDA/NRCS National Geospatial Center of Excellence "USDA-NRCS-NCGC Digital Raster Graphic MrSID Mosaic".



Scale 1:20,000
0 1,000 2,000 Feet



Date:	1/17/2017
Project Number:	214002
Drawn By:	TMK
Checked By:	JAY

CSRS
IMAGINE SHAPE DELIVER
6767 Perkins Road Suite 200 Baton Rouge, LA 70808
Telephone: 225 769-0546 Fax: 225 767-0060
www.csrsone.com

P:\214002\One Acadiana Certified Sites Program\Certified Sites\Allen Estates North\CAD\GIS templates\GIS\Exhibit S. Allen Estates North Site U.S. Geological Survey Quad Map.mxd