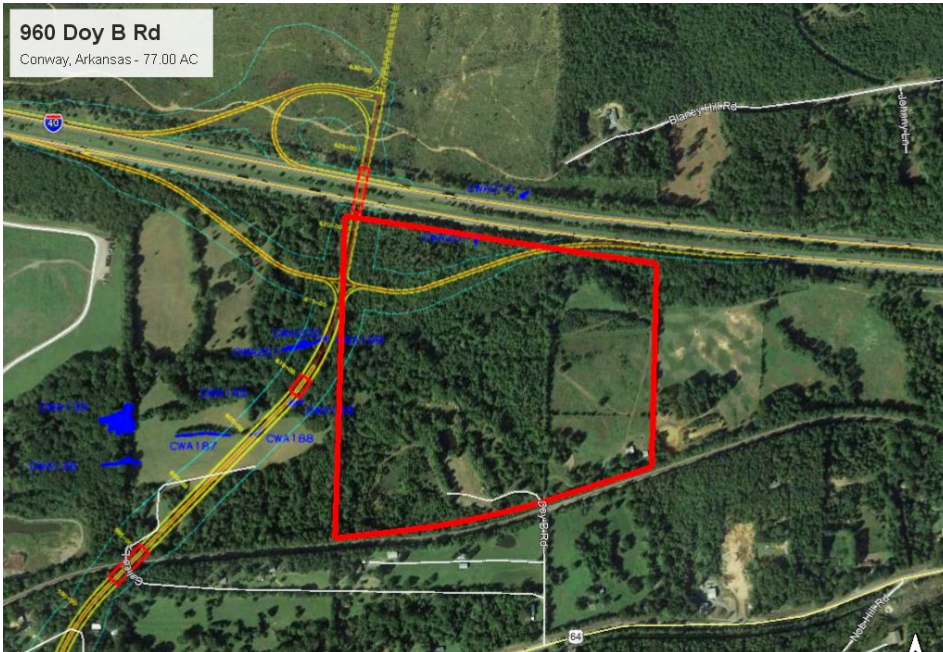


VACANT LAND FOR SALE

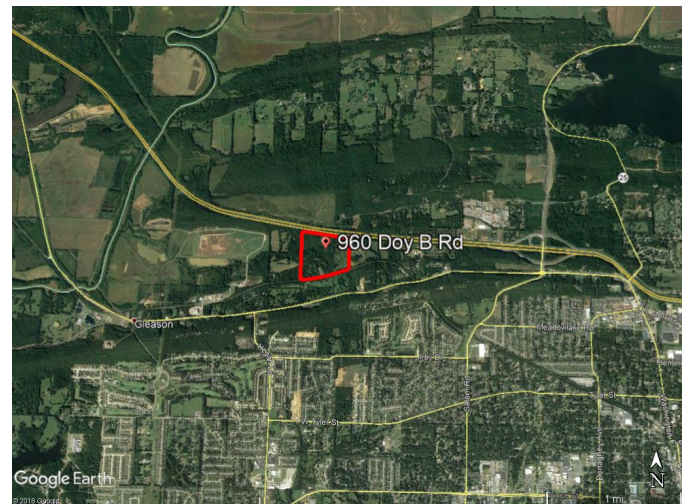
960 Doy B Rd, Conway, Arkansas 72032



PROPERTY FEATURES

PRIME COMMERCIAL PROPERTY with great development potential. This +/- 77.00 acre parcel of land has almost 2,000 feet of I-40 frontage and is located adjacent to Union Pacific railroad just north of Hwy 64 W in West Conway. Potential rail access and adjacent to future location of the Conway Western Loop northern terminus I-40 interchange.

- ◆ **Price: \$3,465,000**
- ◆ **Lot Size: +/- 77.00 Acres**
- ◆ **+/- 2,000 Feet of I-40 Frontage**
- ◆ **Multi-Use Property**
- ◆ **Smaller Acreage Available**



Directions: From Little Rock, take I-40 to Conway Exit 124B and travel west on Hwy 64 W (Old Morrilton Highway) approximately 1.6 miles to Doy B Rd. Property is located at the end of Doy B Rd through two gates.

HartLand Development Company
Dunaway & Hart, Inc.
575 Harkrider Street, Conway, Arkansas 72032

Mitch Hart, CCIM

501-626-2121

mhart@hdevco.com



www.hartlanddevelopment.com