

MEDC Building

130 Doris Lawrence Dr.
Monticello, AR

A planned neighborhood for Skills
Development, Business and Industry

50,088 Sq. Ft. Total Space
11.14 Acres Lot Size

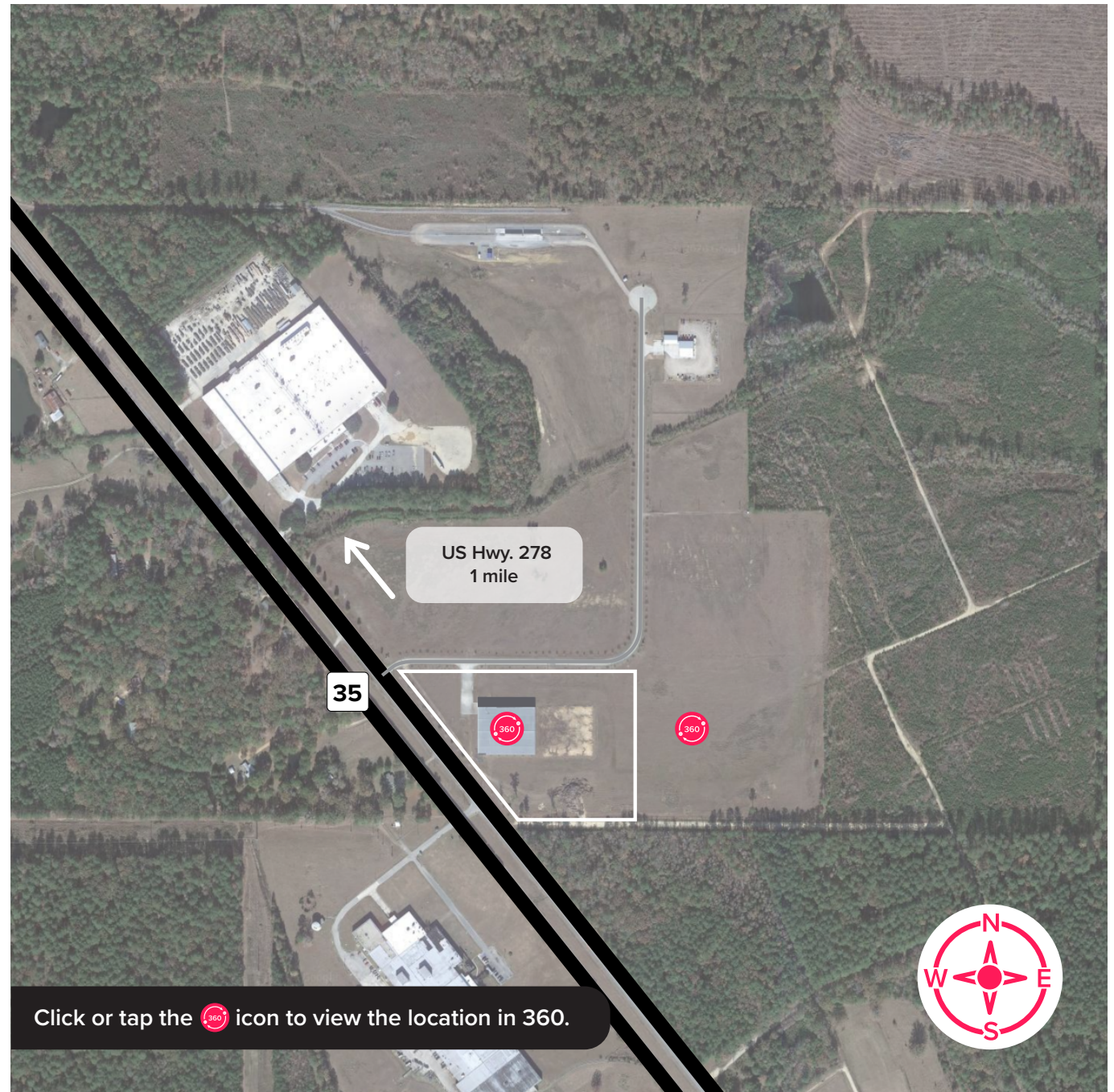
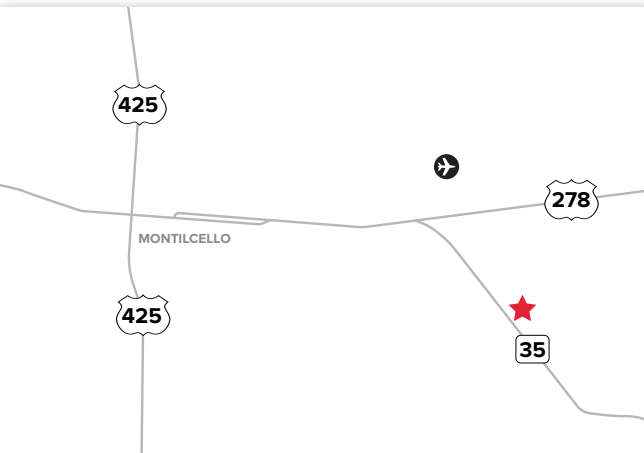
- Distance to US 278: 1 mile
- Distance to US 425: 3.5 miles
- 50,000 Sq. Ft. pad for future expansion



SITE SPECS



INTERACTIVE MAP



MEDC Building

Nita McDaniel

Executive Director
Monticello Economic Development Commission
P: 870-367-3076 (office)
P: 870-723-1900 (cell)
E: director@monticelloedc.org

Chris D. Murphy

Project Manager
Entergy Arkansas Business Development
P: 501-786-7173 (cell)
E: cmurph4@entergy.com

Joe Bailey

Project Manager
Entergy Arkansas Business Development
P: 501-352-9392 (cell)
E: jbaill2@entergy.com



SITE SPECS



INTERACTIVE MAP

